

Figure 8.7 - Chart for the Rapid Design of Channels

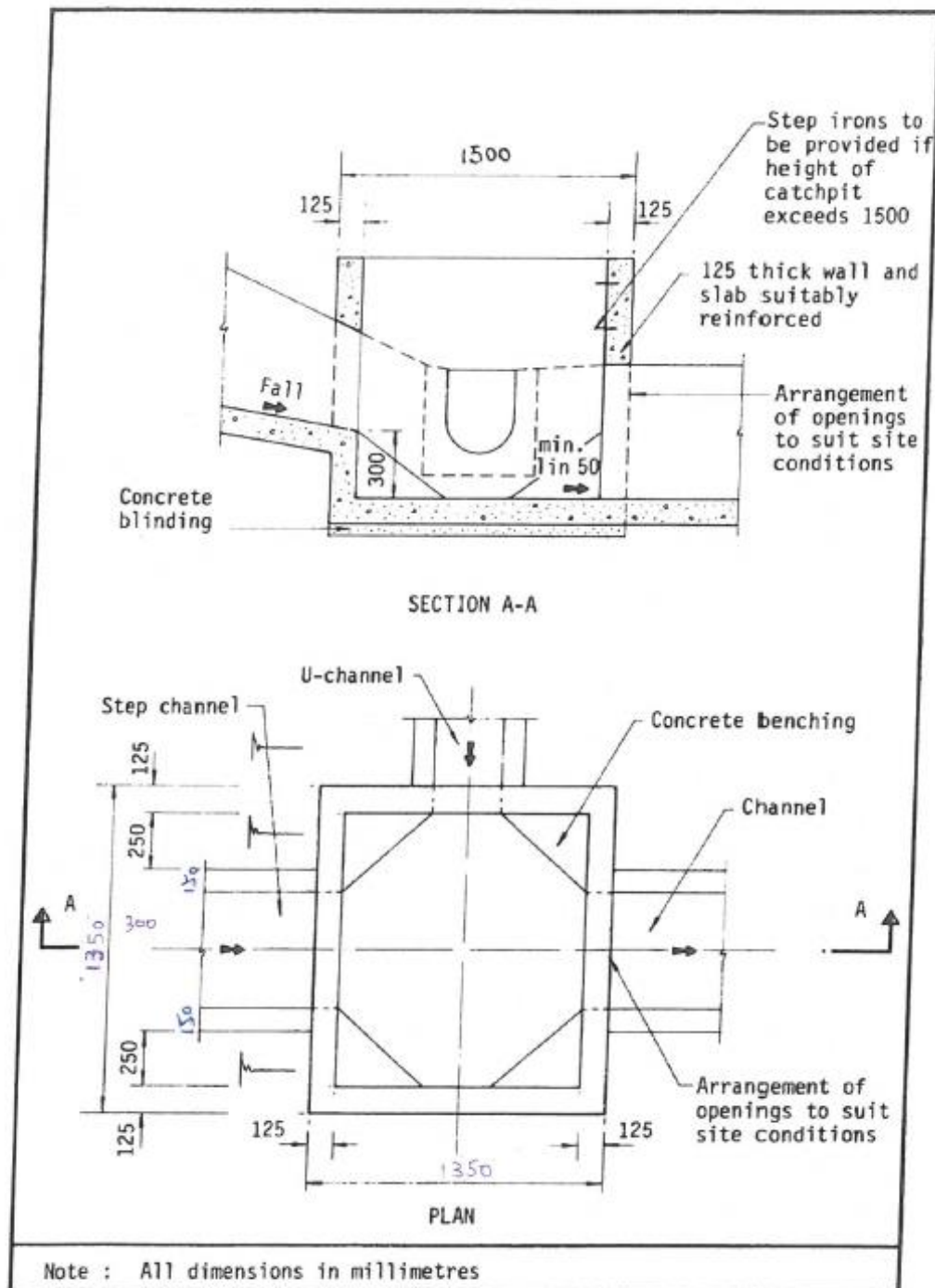
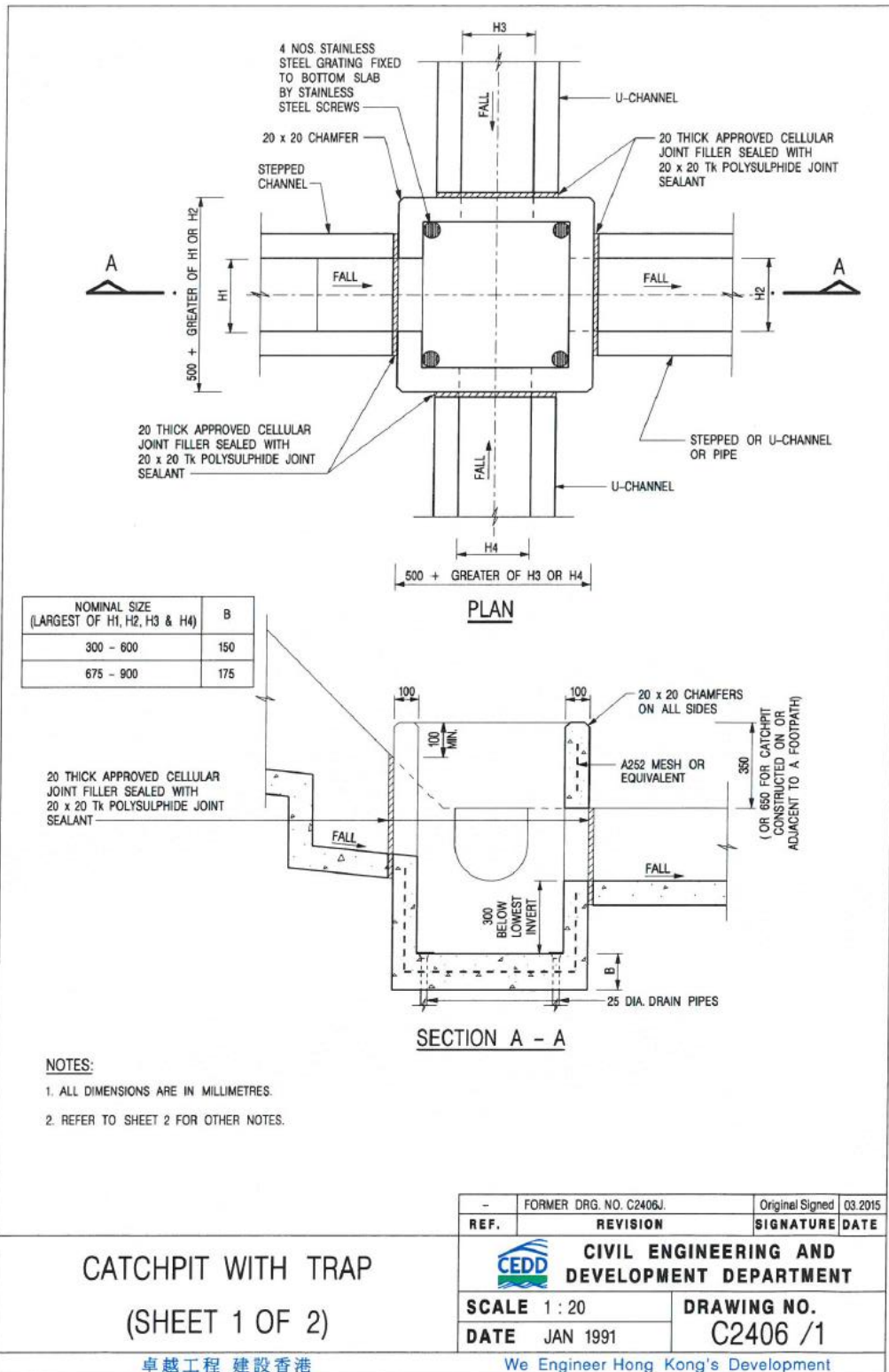
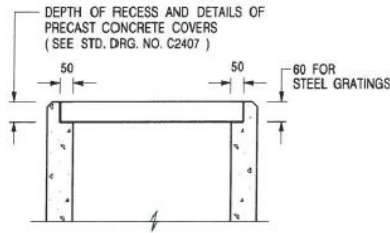


Figure 8.10 - Typical Details of Catchpits

附件 4





**ALTERNATIVE TOP SECTION  
FOR PRECAST CONCRETE COVERS / GRATINGS**

**NOTES:**

1. ALL DIMENSIONS ARE IN MILLIMETRES.
2. ALL CONCRETE SHALL BE GRADE 20 /20.
3. CONCRETE SURFACE FINISH SHALL BE CLASS U2 OR F2 AS APPROPRIATE.
4. FOR DETAILS OF JOINT, REFER TO STD. DRG. NO. C2413.
5. CONCRETE TO BE COLOURED AS SPECIFIED.
6. UNLESS REQUESTED BY THE MAINTENANCE PARTY AND AS DIRECTED BY THE ENGINEER, CATCHPIT WITH TRAP IS NORMALLY NOT PREFERRED DUE TO PONDING PROBLEM.
7. UPON THE REQUEST FROM MAINTENANCE PARTY, DRAIN PIPES AT CATCHPIT BASE CAN BE USED BUT THIS IS FOR CATCHPITS LOCATED AT SLOPE TOE ONLY AND AS DIRECTED BY THE ENGINEER.
8. FOR CATCHPITS CONSTRUCTED ON OR ADJACENT TO A FOOTPATH, STEEL GRATINGS (SEE DETAIL 'A' ON STD. DRG. NO. C2405 ) OR CONCRETE COVERS (SEE STD. DRG. NO. C2407 ) SHALL BE PROVIDED AS DIRECTED BY THE ENGINEER.
9. IF INSTRUCTED BY THE ENGINEER, HANDRAILING (SEE DETAIL 'G' ON STD. DRG. NO. C2405; EXCEPT ON THE UPSLOPE SIDE ) IN LIEU OF STEEL GRATINGS OR CONCRETE COVERS CAN BE ACCEPTED AS AN ALTERNATIVE SAFETY MEASURE FOR CATCHPITS NOT ON A FOOTPATH NOR ADJACENT TO IT. TOP OF THE HANDRAILING SHALL BE 1 000 mm MIN. MEASURED FROM THE ADJACENT GROUND LEVEL.
10. MINIMUM INTERNAL CATCHPIT WIDTH SHALL BE 1 000 mm FOR CATCHPITS WITH A HEIGHT EXCEEDING 1 000 mm MEASURED FROM THE INVERT LEVEL TO THE ADJACENT GROUND LEVEL. AND, STEP IRONS (SEE DSD STD. DRG. NO. DS1043 ) AT 300 c/c STAGGERED SHALL BE PROVIDED. THICKNESS OF CATCHPIT WALL FOR INSTALLATION OF STEP IRONS SHALL BE INCREASED TO 150 mm.
11. FOR RETROFITTING AN EXISTING CATCHPIT WITH STEEL GRATING, SEE DETAIL 'F' ON STD. DRG. NO. C2405.
12. SUBJECT TO THE APPROVAL OF THE ENGINEER, OTHER MATERIALS CAN ALSO BE USED AS COVERS / GRATINGS.

-	FORMER DRG. NO. C2406J.	Original Signed	03.2015
REF.	REVISION	SIGNATURE	DATE

**CATCHPIT WITH TRAP  
(SHEET 2 OF 2)**



**CIVIL ENGINEERING AND  
DEVELOPMENT DEPARTMENT**

**SCALE** 1 : 20

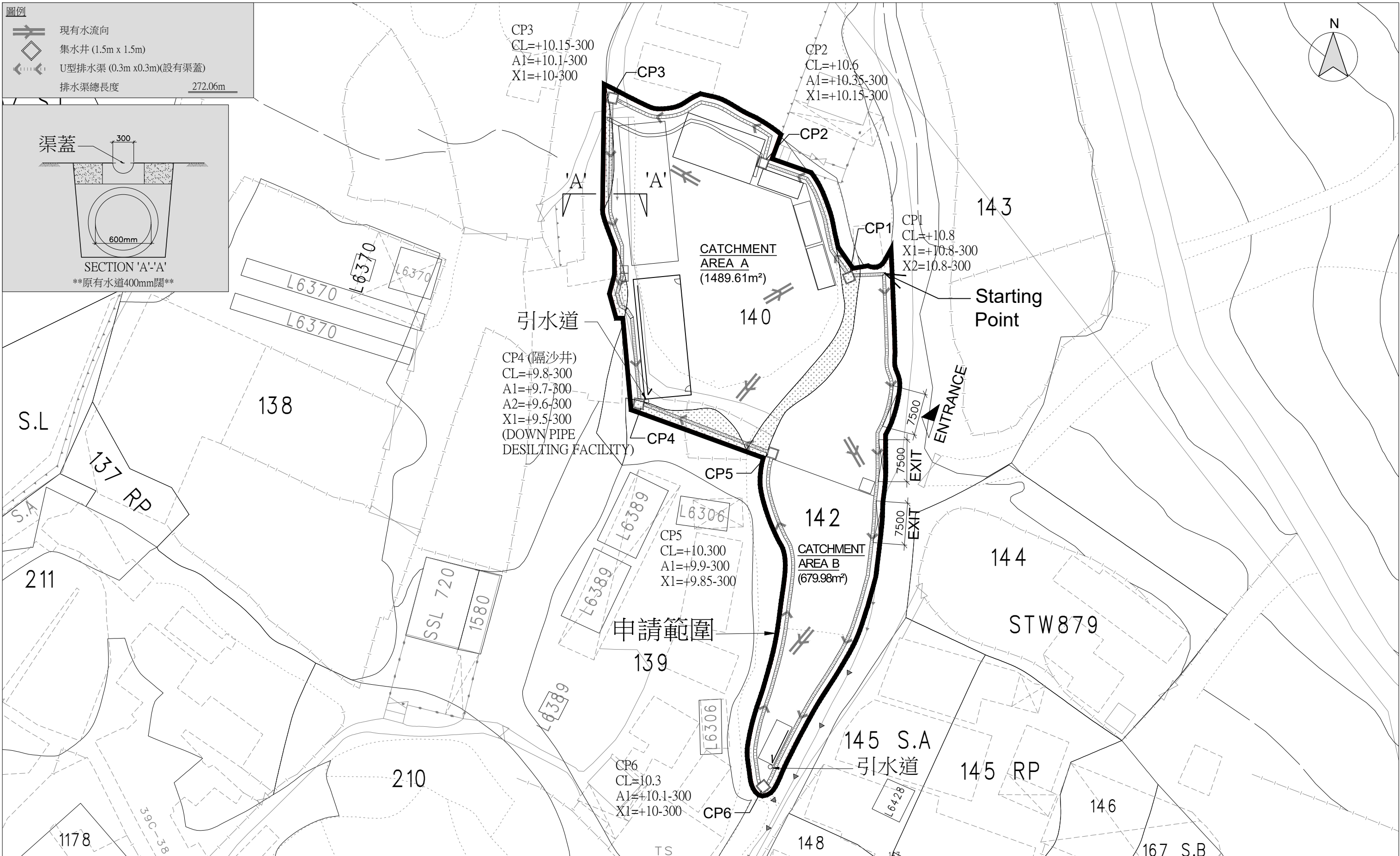
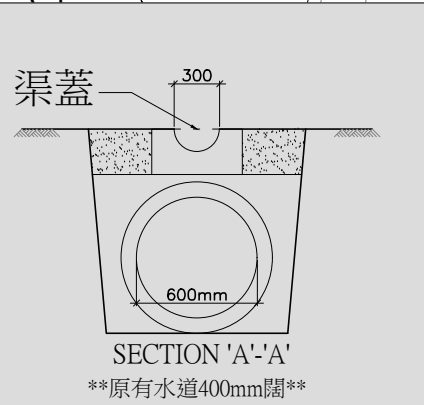
**DRAWING NO.**

**DATE** JAN 1991

**C2406 /2**

**圖例**

- 現有水流向
- 集水井 (1.5m x 1.5m)
- U型排水渠 (0.3m x 0.3m)(設有渠蓋)
- 排水渠總長度 272.06m



**M&D**  
**Planning and Construction Consultant Ltd.**  
 Tel: 2191 4088 Fax: 3105 0810  
 Email: sales@moderneng.com.hk

Project  
 LOT D.D. 140 PART, 142 PART AND ADJOINING OF GOVERNMENT LAND IN D.D. 52, FU TEI AU, SHEUNG SHUI, NEW TERRITORIES

Application  
 TEMPORARY STORAGE CONTAINER /REPAIR YARD WITH ANCILLARY OFFICE FOR A PERIOD OF 3 YEARS

Drawing Title PROPOSED DRAINAGE LAYOUT PLAN		Notes	
Scale 1:500 (A3)	Revisions	Copyright Reserved nothing may be reprinted or utilized in any form or by any means without written permission from the M&D.	
Drawn by Arthur	Designed by LW	Checked by AY	Date 18-Nov-2024
Job No. -	Drawing No. P-05	Revisions	Description

Revisions	Description	Date